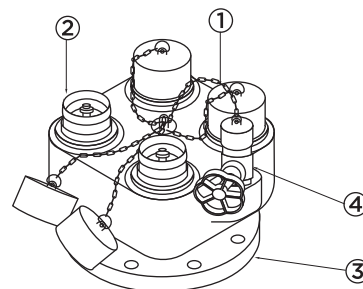
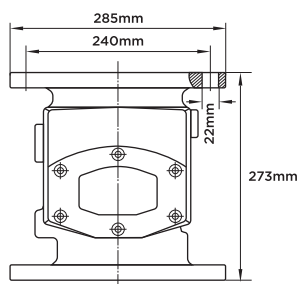


# ALARM CHECK VALVE ACV-F



# 4 WAY BREECHING INLET 4WB-F



## MATERIAL

PART NAME	MATERIAL
Body	Ductile Iron
Water Motor Gong	Carbon Steel / Aluminium Alloy

## MATERIAL

NO.	PART NAME	MATERIAL	SPECIFICATION
1	Body	Cast Iron	BS 1452
2	Inlet	Brass	BS 1400 / EN 1982
3	Outlet	Ductile Iron	GGG40 (EN-JS1030)
4	Drain Valve	Brass	

## SPECIFICATION

- Install in vertical position
- Easy for Installation, operation and maintenance
- All moving parts can be serviced without removing the valve
- Flange connection complying with BS Standard

- 1" drain valve complete with blank cap and chain
- Hydrostatically tested and manufactured in accordance with BS 5401-3:1975
- Inlet male instantaneous connections complying with BS 336:2010
- 4" outlet flanged to 6" BS 10:1962 Table E

## PRESSURE/TEMPERATURE RATING

Working Pressure	16 bar
Testing Pressure	Seal: 32 bar Strength: 64 bar
Working Temperature	4 - 70°C
Pressure Loss	<0.2 Mpa

Working Pressure	10 bar
Testing Pressure	Shell: 20 bar
Working Temperature	0 - 50°C